



YJ240B

Motore per ascensore

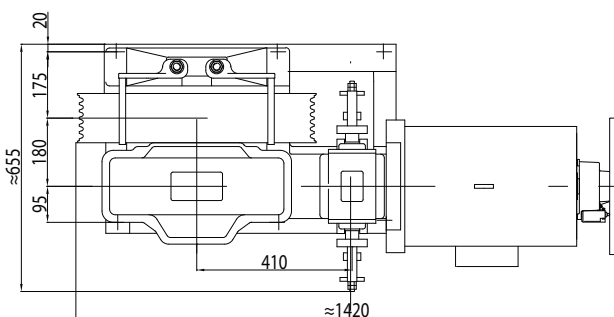
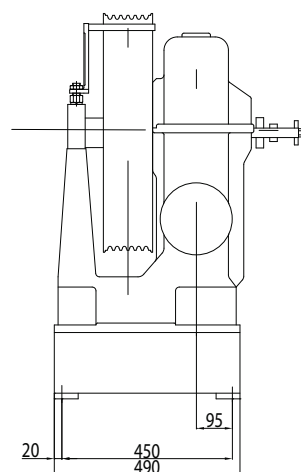
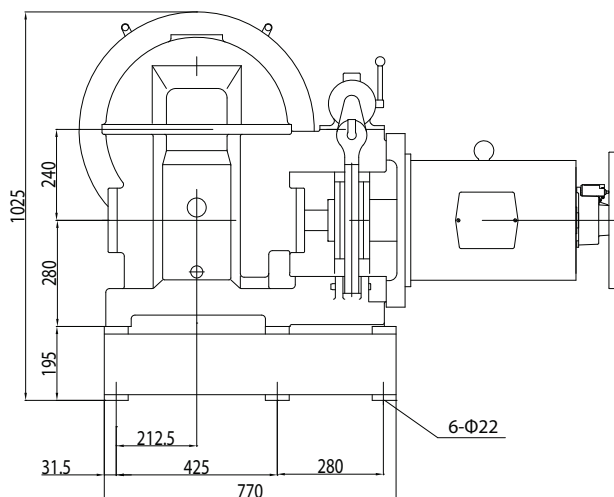
Sospensione : 1:1

Controllo : VVVF

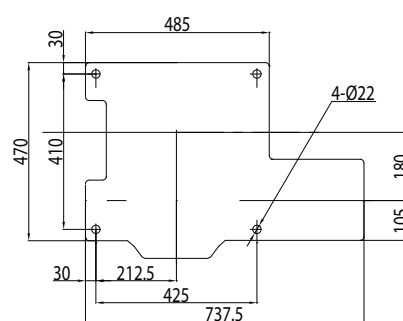
Freno (DZE-12E) : DC110V 2 A

Peso (con supporto) : 730 kg

Portata Max statica : 7500 kg



The footing hole dimensions of box



Carico (kg)	Velocità (m/s)	Rapporto	Puleggia Ø (mm)	Funi (mm)	Potenza (kW)	Poli
800	1,6	59:2	Ø 620	5XØ13X20	11	4
800	1,75	55:2	Ø 620	5XØ13X20	15	4
1000	1,0	49:1	Ø 620	5XØ13X20	11	4
1000	1,6	59:2	Ø 620	6XØ13X20	15	4
1000	1,75	55:2	Ø 620	6XØ13X20	18,5	4
1000	2,0	49:2	Ø 620	6XØ13X20	18,5	4
1150	1	49:1	Ø 620	6XØ13X20	15	4
1150	2	49:2	Ø 620	6XØ13X20	22	4

Nota:

La puleggia a sinistra è opzionale.